



**James A. Briscoe, Professional Geologist, AZ CA
CEO/Chief Geologist
Liberty Star Uranium & Metals Corp.**

Jim Briscoe Comments on Recent Gold Price Movement Up

July 06, 2016

Barbara Carroll, Director and Vice President at International Star, Inc., another mining/exploration company with offices in Tucson, Arizona, has recommended an informative article via a LinkedIn group we both belong to. Barbara is a longtime friend and colleague; when she has something to share, I am certainly interested.

The article in [Streetwise Reports](#), "[A Bull Market in Gold Is Now Confirmed](#)" is by Jack Chan, a technical analyst with a long involvement in mining sector stocks. He notes "we have been

patiently waiting for the confirmation of a bull market in gold, and this past week we have just that" and "the 2015 high in gold prices is now exceeded." While Chan will be looking for dips to accumulate, this is good news for the gold mining community.

Our gold anomaly at Hay Mountain, approximately 1 square mile, was at first established through geochemical studies starting in 2003-2004. Mapping during 2013/2014 according to much more extensive geochemical and geophysical ZTEM helicopter findings reconfirmed the anomaly and its surrounding environment of a large, typically zoned multi-metallic porphyry copper system. New vegetation geochemical sampling from 2011-2014, replicating the vegetation sampling in 1972, 2003-2004, shows that all three periods of vegetation sampling and assaying revealed the same metallic anomalies where they were adjacent or superimposed. Thus, one of our next tasks is to investigate by drilling whether there is a significant gold mineral occurrence at or near the surface, and whether it is of ore grade tenor; that is part of our planned program during Phase 1 drilling.

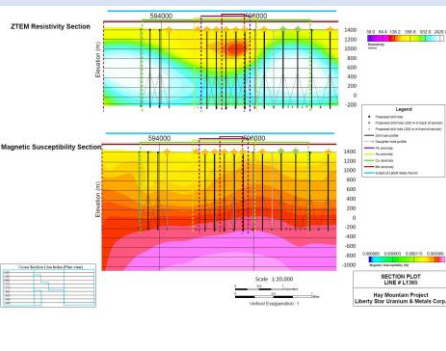
Driving the porphyry system is a very large intrusive - once molten but now solidified mass – known as a pluton or batholith of granitic composition. Porphyry copper systems are always associated with such plutons. This pluton is identified by its large magnetic signature of some 40 square miles – see slide 2. We know it is in the porphyry copper age range in this area, and it is 73 million years old. Our geochem anomaly is centered on the pluton, again typical of copper porphyries.

[James A. Briscoe](#), Professional Geologist, AZ CA

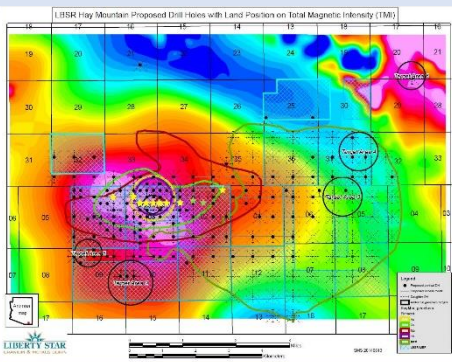
CEO/Chief Geologist

Liberty Star Uranium & Metals Corp.

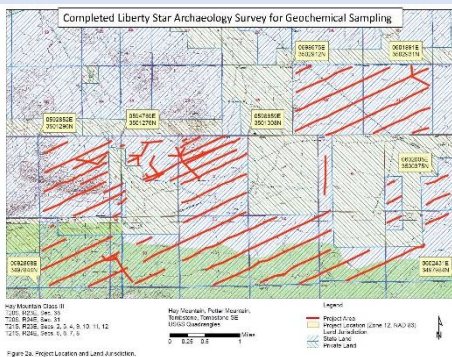
RISK FACTORS FOR OUR COMPANY ARE SET OUT IN OUR 10-K AND OTHER PERIODIC FILINGS FILED WITH THE SEC ON EDGAR.



1. 3d Mag to depth –mag hi reflects pluton October 2015

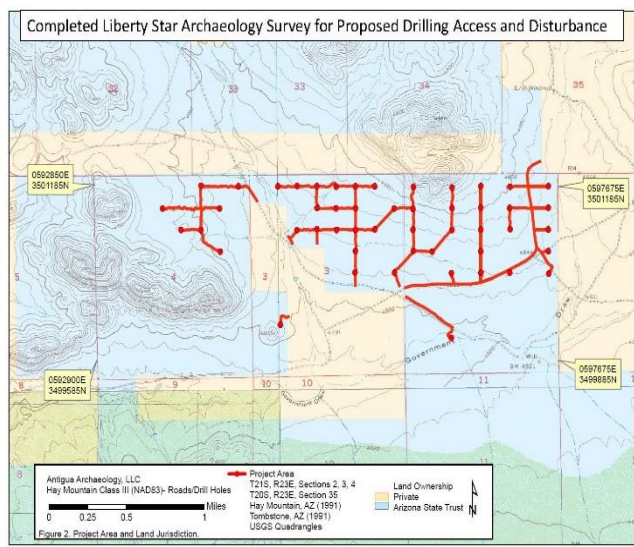


2. Surface mag reflecting pluton at depth with drill targets October 2015

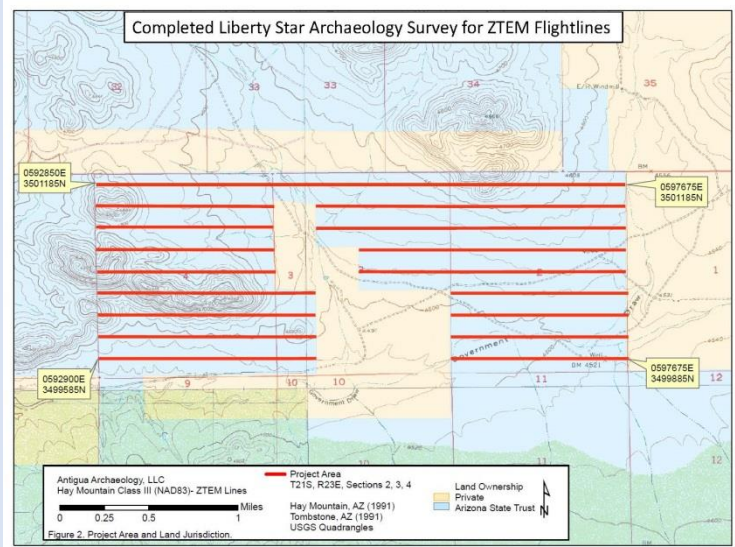


3. Arch Survey Map October 2015

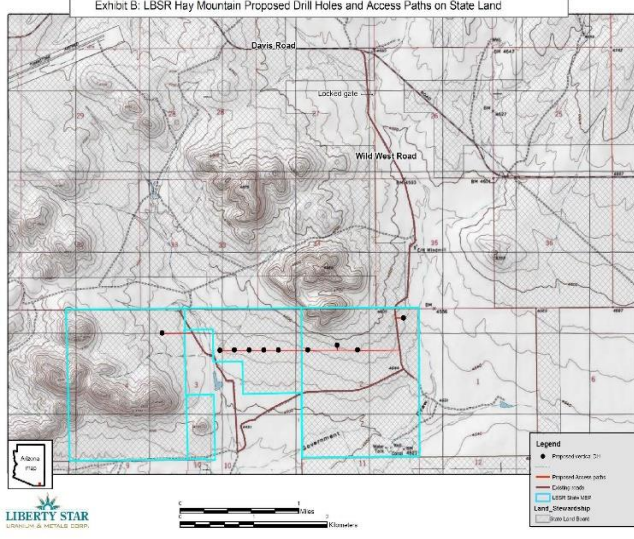
The below maps showing the Hay Mountain gold anomaly are located on our website in the [Hay Mountain Image Gallery](#):



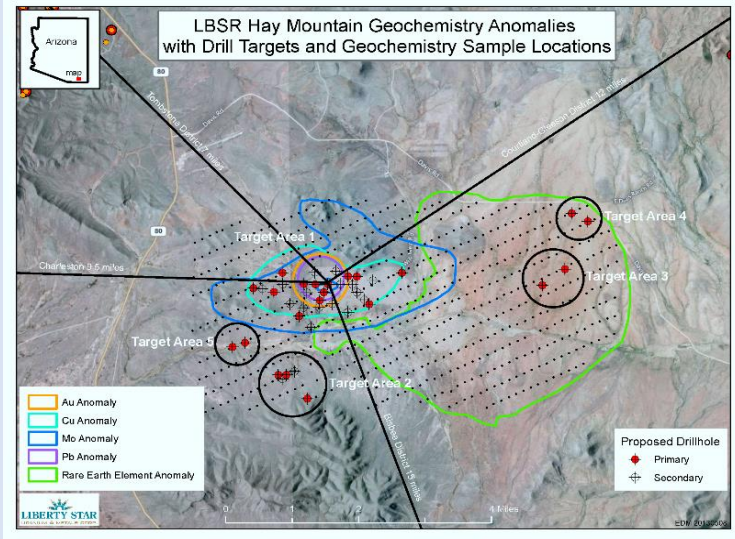
4. Arch Survey Map October 2015



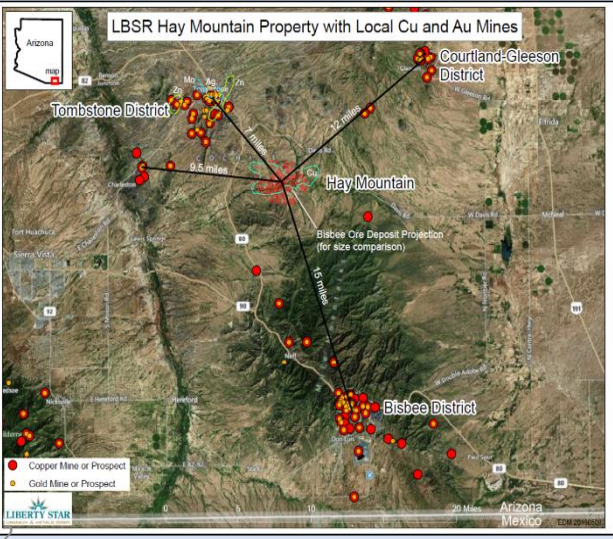
5. Arch Survey Map October 2015



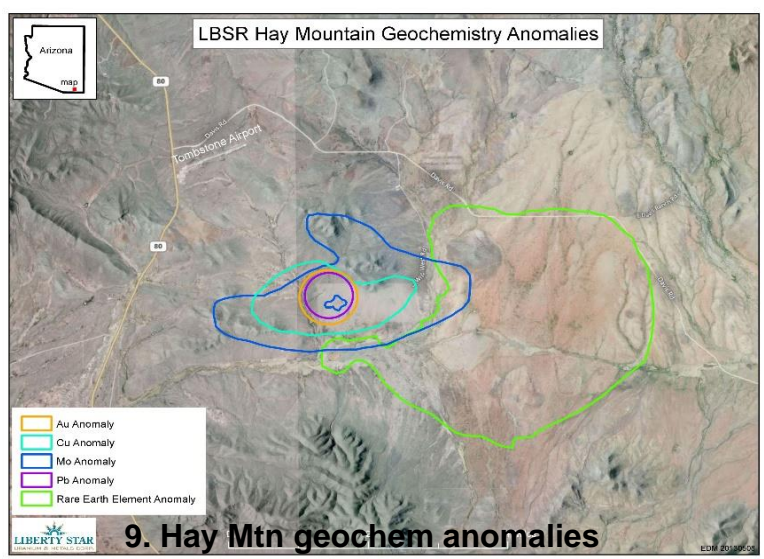
6. Map with Drill Hole Targets October 2015



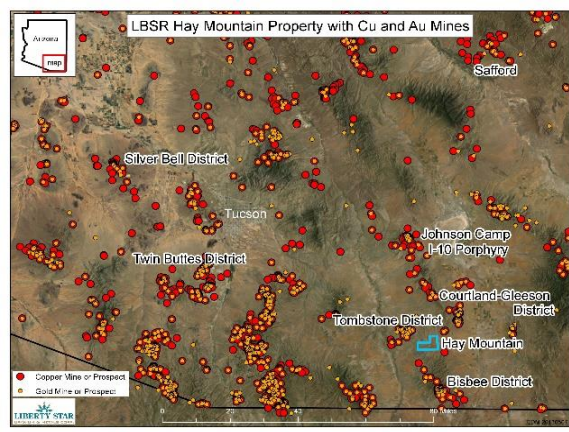
7. Hay Mtn geochem anomalies w/ drill targets and geochem sample locations



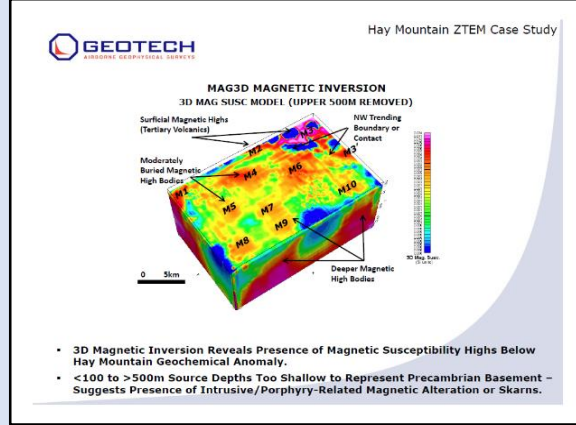
8. Hay Mtn property local Cu and Au mines



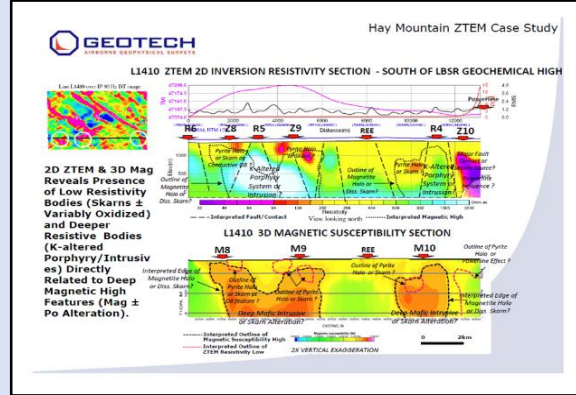
9. Hay Mtn geochem anomalies



10. Southeast Arizona Cu and Au mining districts



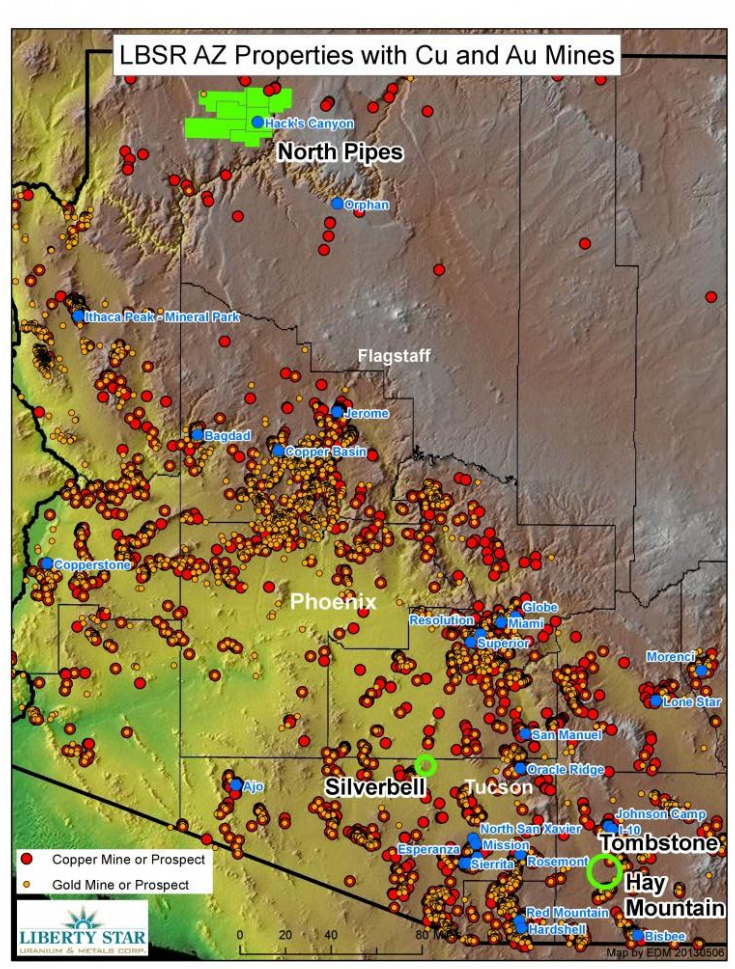
12. Mag3D magnetic inversion Feb 2014



13. L1410 ZTEM 2D Inversion Resistivity Section Feb 2014



14. JAB mapping & Niton geochem Sept. 2015



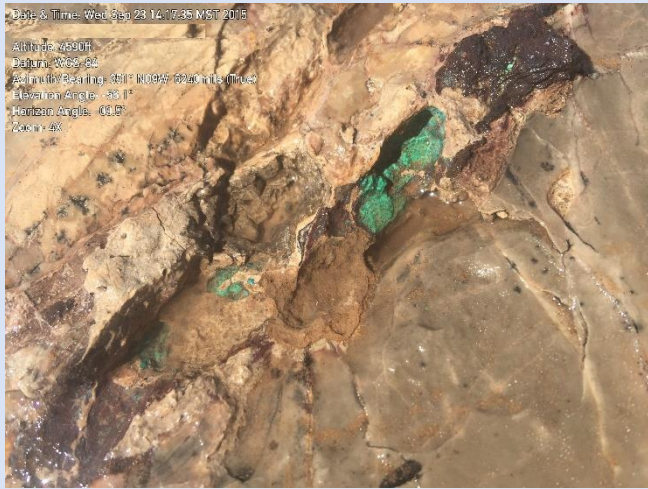
11. AZ LBSR project locator Cu and Au properties and prospects



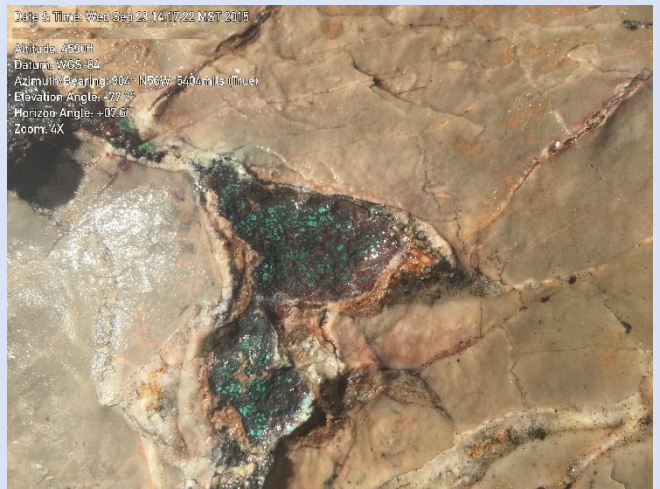
Date & Time: Fri Sep 11 15:06:11 MST 2015

Altitude: 4593ft
 Azimuth/Bearing: 152° S28E 2702mils (True)
 Elevation Angle: -08.5°
 Horizon Angle: +01.8°
 Zoom: 1X

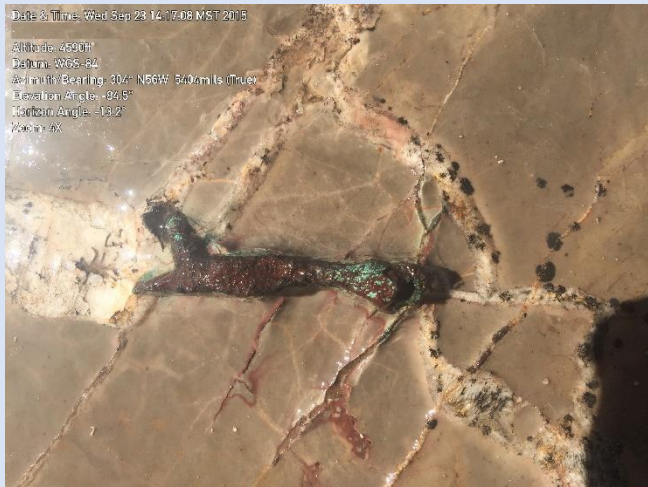
15. JAB mapping on space image - Niton geochem Sept. 2015 Panorama



16. Green copper mineral malachite in leached capping Niton geochem Sept. 2015



17. Niton geochem -21% copper Sept. 2015



18. Niton geochem Sept. 2015



19. Niton geochem on Breccia pipe Sept. 2015



20. Niton geochem – green copper oxide broken from Niton anomaly Jay Crawford points to exposed copper from breccia pipe his L hand indicates source Sept. 2015



21. Niton geochem- Breccia pipe, typical of porphyry copper deposits. Fragments have re-cemented themselves Sept. 2015